

Choose the session(s) you will attend:

**Full series registration:**

\_\_\_\_\_ *February 3, March 3, & April 7*

EARLY BIRD – before December 22: **\$30**

Register after December 22: **\$40**

OR

**Individual sessions: \$15 each**

\_\_\_\_\_ *February 3 session*

\_\_\_\_\_ *March 3 session*

\_\_\_\_\_ *April 7 session*

~ Please print ~

Name \_\_\_\_\_

Company \_\_\_\_\_

Address \_\_\_\_\_

City \_\_\_\_\_

Zip code \_\_\_\_\_

Phone ( \_\_\_\_\_ ) \_\_\_\_\_

Email \_\_\_\_\_

**Amount enclosed:** \$ \_\_\_\_\_

**Payable to:** NEW Master Gardeners

**Send to:** Horticulture Program  
Brown County UW-Extension  
210 Museum Place  
Green Bay, WI 54303

**For more information, contact:**

Vijai Pandian, Horticulture Educator  
920-391-4611  
[vijai.pandian@ces.uwex.edu](mailto:vijai.pandian@ces.uwex.edu)

NEW Master Gardeners and Brown County UW-Extension are hosting a 2018 Garden Series. The series is comprised of three different sessions with renowned garden speakers who will share their expertise to enhance your gardening experience.

The series will be held at the Neville Public Museum, 210 Museum Place, Green Bay, and is open to the general public. You may choose to attend one, two, or all three of the featured sessions. Sign up for the full series by **Friday, December 22**, to receive a discounted registration fee!

**Take advantage of the early bird registration discount by registering for the full series no later than:**

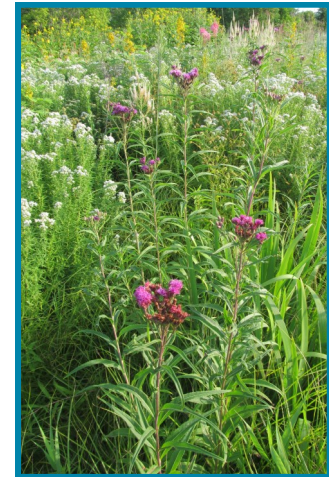
**Friday, December 22**



*UW-Extension provides equal opportunities in employment and programming, including Title IX and ADA.*

# 2018 Garden Series

*To learn, experience,  
& enjoy all season gardening*



February 3, March 3, & April 7

Neville Public Museum  
210 Museum Place  
Green Bay, WI



# 2018 Garden Series ~ Attend one, two, or all three sessions!



**Saturday, February 3  
10 AM to 12:30 PM**

## **“Interesting & Newer Perennials for Your Garden”**



**Guest speaker:  
Nancy Nedveck  
The Flower Factory  
Stoughton, WI**

Nancy has had an interest in plants since childhood, culminating with a degree in horticulture from UW-Madison. She and her husband, David, started The Flower Factory in 1984 and opened the farm in 1988. Currently, they focus on perennials and have developed the largest selection in the Midwest. Nancy gives talks to anyone who will listen, as long as it is about perennials!

## **“Secrets Revealed: New Herbaceous Hybrid Peonies”**

**Nate Bremer  
Solaris Farms  
Reedsville, WI**



Nate will take you on a hybridizer’s journey to produce new herbaceous hybrid peonies and take a look at some of the best new cultivars becoming available. While most gardeners are

familiar with the common garden peony (*Paeonia lactiflora*), there are many new emerging hybrids that are quite different. These plants have outstanding new colorations, forms, bloom seasons and plant habits. Few are well known by gardeners outside a small group of connoisseurs/hybridizers, but are quickly making their way into collectors’ gardens. The Midwest is a secret hot bed for new hybrids, and you will surely be astounded by these incredible ‘secret’ plants.



**Saturday, March 3  
10 AM to 12:30 PM**

## **“Prairie Plants for Urban & Suburban Gardens”**

**Guest speaker:  
Neil Diboll  
Prairie Nursery  
Westfield, WI**



Many of our native prairie flowers and grasses make excellent garden plants. The showy blooms and ornamental textures of the grasses provide so many opportunities to create low maintenance, ecologically sound landscapes that require little or no fertilizers, pesticides, and watering. The North American Prairie is dominated by perennials that can be included in “pure prairie”

gardens, or mixed with other more traditional perennials. Neil will highlight the showiest and best-behaved prairie plants for creating a wide variety of prairie gardens in small areas.



**Saturday, April 7  
10 AM to 12:30 PM**

## **“From Seed Starting & Plant Selection to Season Extending Crops”**



**Guest speaker:  
Eben Erhard  
Natural Beauty Growers  
Denmark, WI**

From seed starting and plant selection to season extending crops, using a traditional garden plot or integrating vegetables into an urban landscape, learn how to get the most out of your vegetable garden. Eben has been a vegetable gardener for over 40 years, gardening in five states in elevations ranging from 100-9,000 feet. He has mastered a variety of techniques including raised beds, high hoops (greenhouse production), low hoops (cold frame), straw bales, container gardening, and hydroponics.



~ All three sessions will be held at the Neville Public Museum, 210 Museum Place, Green Bay. ~